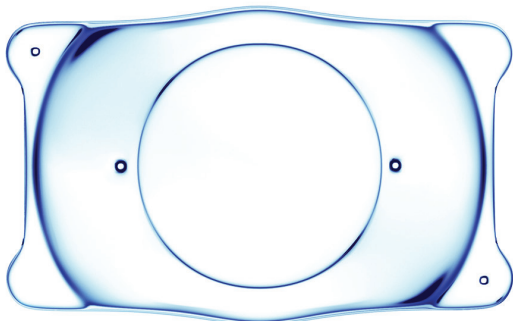


# Welcome to The Visian ICL Experience



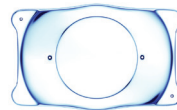
The purpose of this kit is to provide you with information on the Visian Implantable Collamer Lens procedure for nearsightedness (or myopia). Please read the enclosed pages and discuss any questions you may have with your doctor.

Simply put, the Visian ICL provides the ultimate in performance for the ultimate in satisfaction. That's why many elite athletes and famous celebrities, who have very high demands for their individual vision needs, choose it rather than other vision correction options.

It's no wonder that there are over 350,000 Visian ICL eyes worldwide with an exceptional patient satisfaction rate. Are you ready to get the ultimate in performance for your eyes?



- Visian ICL provides "High Definition Vision" a sharp, clear vision with incredible depth and dimension<sup>1,2</sup>



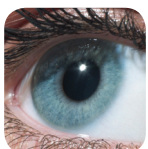
- Maintenance-free, high quality vision that can be removed or replaced if vision needs change



- A simple 15 minute procedure and short recovery time



- Made with an advanced lens material that uniquely protects the eye by blocking harmful UV rays



- The Visian ICL is a soft, tiny lens discreetly placed into the eye that's invisible to others



- A patient satisfaction rate that's over 99%<sup>3</sup>

# What Is the Visian ICL and How Does it Work?

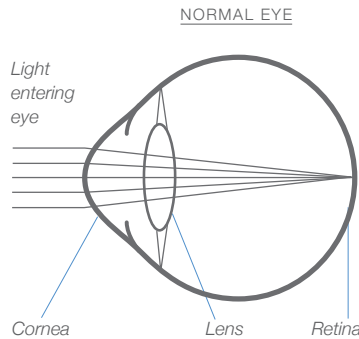


Visian ICL (Implantable Collamer Lens) is a soft, flexible lens that is placed in the eye to correct a person's vision, reducing dependency on glasses or contact lenses. While traditional contact lenses go on the surface of the eye, the Visian ICL is positioned in the eye between the iris (the colored part of the eye) and the natural lens. One of the important advantages of the Visian ICL is that while it can permanently correct your vision, the lens can be simply removed and/or replaced if necessary.

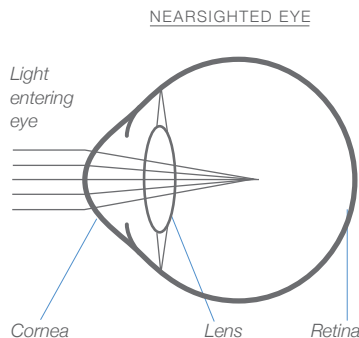
## How does the Visian ICL work?

You see objects because your eye focuses light into images. Your eye works like a camera. The camera lens focuses light to form clear images onto film.

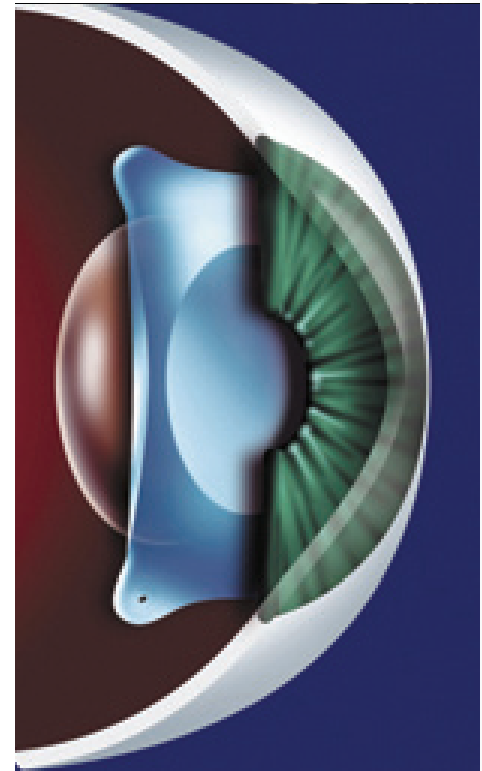
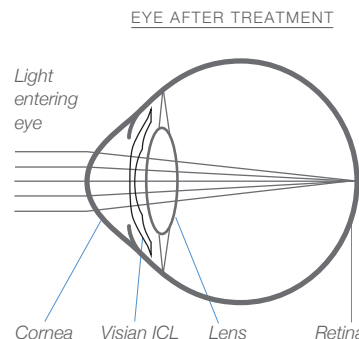
Both the cornea and lens in the eye focus light onto the **back surface** of the eye, called the retina, to form clear images.



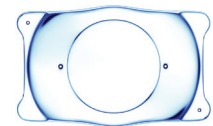
Nearsightedness is a type of focusing error that results in blurry distant vision. Light from a distant object focuses in **front** of the retina, rather than on the retina.



The Visian ICL functions to focus light properly back onto the retina in a similar way glasses and contact lenses do. Made from a biocompatible collagen-based material, the Visian ICL is placed into a space of the eye directly behind the iris and in front of the natural lens. In this position, the Visian ICL functions to focus light properly onto the retina helping create clear distance vision.



*The Visian ICL is an Implantable Collamer Lens that works with the eye to correct vision. Unlike traditional contact lenses that go on the surface of the eye, the Visian ICL is positioned inside the eye between the iris (the colored part of the eye) and the natural lens.*



# What Should You Expect During Visian ICL Surgery



## Before the Surgery

Before surgery, your doctor needs to determine your complete medical and eye history and check the health of both your eyes. This exam will determine if your eyes are healthy and if you are a good candidate for Visian ICL surgery.

Tell your doctor if you take any medications, have any eye conditions, have undergone previous eye surgery, have any medical conditions or have any allergies. Ask your doctor about when you need to stop wearing your contact lenses.

## Two to Three Weeks Before Surgery

About two to three weeks before your Visian ICL surgery, your eye doctor will schedule to *perform YAG laser iridotomy to prepare your eye for implantation of the Visian ICL*. This is necessary to make sure that the fluid flows properly from the back chamber to the front chamber of your eye to prevent a buildup of pressure within the eye after Visian ICL surgery. The doctor will usually apply numbing drops to the eye and *make tiny openings in the colored portion of the eye with a laser beam*.

After the iridotomy procedure, your eye doctor will prescribe eye drops for you to use. It is important that you follow all medication instructions. Your physician will instruct you to discontinue the use of these medications before the day of surgery.

## The Day of Surgery

The day of surgery, your eye doctor will place eye drops in your eye to dilate (enlarge) the pupil in your eye.

Once your pupil is fully dilated, your eye doctor will put numbing eye drops in your eye and/or use a numbing medication and ask you to lie on your back on the treatment table/chair in the treatment room. Your eye doctor may discuss alternative anesthetic/sedation options with you before surgery.

A small opening is made into your cornea and the Visian ICL is inserted and positioned in its proper position in the eye. The procedure will usually take approximately 15 minutes.



*Before surgery complete medical and eye history check.*

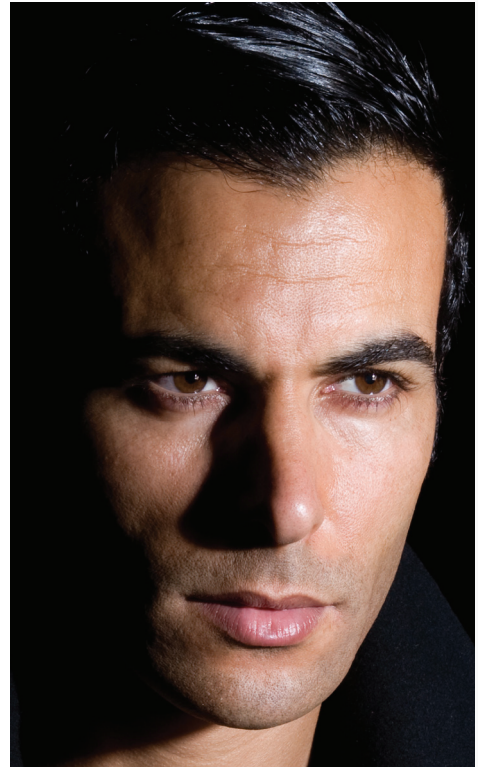


*Typically the procedure takes 15 minutes.*



*Arrange for transportation home.*

# What Should You Expect During Visian ICL Surgery



After the surgery is complete, your doctor will place some eye drops/ointment in your eye. For your eye protection and comfort, your doctor may apply a patch or shield over your eye. The procedure is painless because of the numbing medication. ***It is important that you do not drive yourself home and make arrangements before the day of surgery for transportation home.*** Your doctor will let you know when your vision is good enough to drive again.

## The First Days After Surgery

Your physician will need to see you the day after surgery for a checkup which will include monitoring the pressure in your eye.

You may be sensitive to light and have a feeling that something is in your eye. Sunglasses may make you more comfortable. If needed, your doctor can prescribe medication to make you feel more comfortable after the surgery. You will need to use antibiotics and anti-inflammatory eye medications (eye drops/ointments) after the surgery. Your physician will inform you when you can discontinue these medications. As with any eye procedure, it is important to contact your doctor immediately if your vision changes or you are feeling any discomfort.

***IMPORTANT: Use the eye medications as directed by your eye doctor. (Your results may depend upon the following of your doctor's instructions).***

DO NOT rub your eyes especially for the first 3 to 5 days. If you notice any sudden decrease in your vision, you should contact your doctor immediately.

After Visian ICL surgery follow your physician's recommendations for eye care and follow-up visits. It is important your physician annually checks your vision for any changes.



*Day after surgery eye examination.*



*Eyes may be temporarily sensitive to light.*



*Use medications as directed by your doctor.*

## Online Resources

---

Below are some resources that may be especially helpful to you in the understanding of the Visian ICL.

Website: [www.visianinfo.com](http://www.visianinfo.com)

Visian ICL Blog: <http://visianinfo.com/blog>

Facebook: <http://www.facebook.com/VisianICL>

Twitter: <https://twitter.com/visianicl>

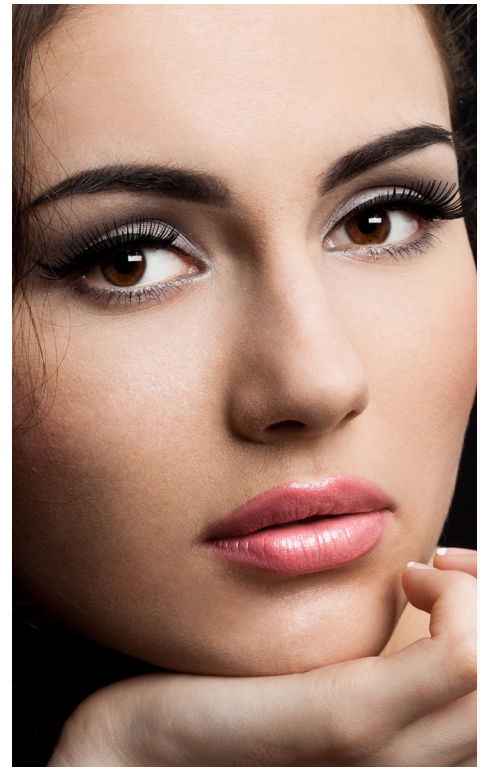
Youtube: <http://www.youtube.com/thevisianicl>

Instagram: <http://instagram.com/visianicl>

Wiki Pedia: [http://en.wikipedia.org/wiki/Implantable\\_Collamer\\_Lens](http://en.wikipedia.org/wiki/Implantable_Collamer_Lens)

Google +: <https://plus.google.com/107523008741369258699/posts>

Office name here: **Office website address here**



Instagram



WIKIPEDIA



---

## INDICATION

The Visian ICL is approved for use in adults from 21 to 45 years of age and a correction in myopia ranging from -3.0 to -15.0 and a reduction in myopia ranging from -16.0 to -20.0.

## CONTRAINDICATIONS

Patients who are under 21 years old are not suitable candidates for the Visian ICL. The Visian ICL is also contraindicated in:

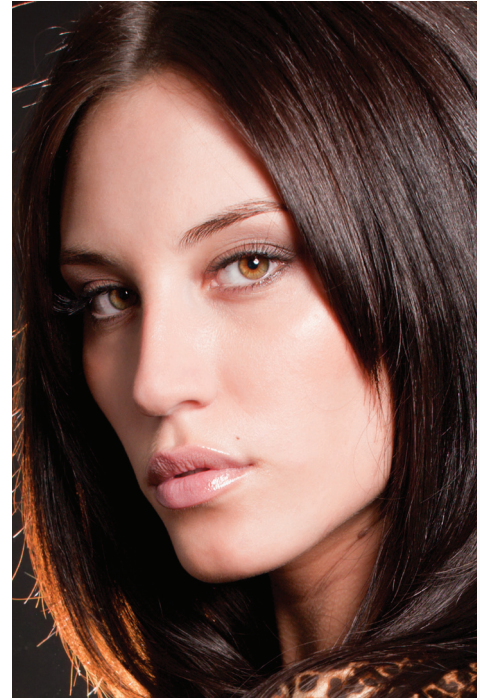
- Patients with an ACD of < 3.0mm
- Patients with anterior chamber angle less than Grade III as determined by gonioscopic examination
- Patients who are pregnant or nursing
- Patients who do not meet the minimum endothelial cell density

## OTHER CONSIDERATIONS

Results may vary and it may not be right for everyone.

Like all surgical treatments of the eye the Visian ICL carries risks including: need for a second surgery, temporary swelling or inflammation, cataracts, increases in eye pressure, retinal detachment, endothelial cell loss and reduced visual acuity.

Consult with your healthcare provider to learn more about the Visian ICL and possible complications.



# Frequently Asked Questions

---



## Exactly where is Visian ICL placed in the eye?

Visian ICL is placed behind the iris and in front of the eye's crystalline lens. The lens does not touch any internal eye structures within your line of vision and is designed to stay in position.

## What is the track record of Visian ICL?

Extensive research and development preceded the introduction of Visian ICL. The lens has been implanted in over 350,000 eyes worldwide. The satisfaction rate among patients is extremely high—above 99%.<sup>3</sup> Visian ICL provides excellent and stable outcomes.

## What if my vision changes?

Visian ICL offers treatment flexibility. If your vision changes dramatically, the lens can be removed and replaced.

## Can the Visian ICL dry out or get dirty like a contact lens?

Visian ICL avoids problems experienced with traditional contact lenses. It is designed to remain in place inside your eye, without maintenance. A routine, annual visit with your eye doctor is recommended to make sure everything remains safe and effective.

## Can Visian ICL be seen by the naked eye?

No. The lens is positioned behind the iris where it is invisible to both you and observers. You enjoy a cosmetic appearance that is natural. Only your doctor will be able to tell that vision correction has taken place.

## What is the Visian ICL made of?

The Visian ICL is made of Collamer, an advanced lens material that is highly biocompatible. Collamer does not cause a reaction inside the eye and contains an ultraviolet filter that provides protection to the eye.

## How long does the Visian ICL stay in my eye?

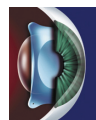
The Visian ICL is intended to remain in place in the eye without maintenance. Should it become necessary, the lens can be removed by your doctor.

## Can the Visian ICL be felt once it is in place?

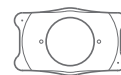
The lens is not noticeable after it is put in place. It does not attach to any structures within the eye and stays in position. The horizontal edges rest on the sulcus on the side of the eye.

## Does the Visian ICL procedure hurt?

Normally, very little discomfort is associated with the Visian ICL procedure. A light topical or local anesthetic is administered and a mild sedative may be given during the surgery. Once the Visian ICL is placed in the eye it's not noticeable in the eye.



*Visian ICL is placed behind the iris and in front of the eye's crystalline lens*



*The Visian ICL is made of an advanced lens material that is highly biocompatible.*



*The satisfaction rate among patients is extremely high—above 99%.*

# Frequently Asked Questions

---



## **Why does the Visian ICL cost more than LASIK?**

The Visian ICL is a premium option for patients with moderate to severe myopia. The vision you can obtain by the Visian ICL technology is often referred to as "High Definition" vision—a sharp, clear and vivid vision with great depth and dimension.<sup>1,2</sup> In addition, the Visian ICL is a maintenance-free permanent lens that can be removed at any time if necessary.

## **I've never heard of the Visian ICL...Where can I find out more?**

We will provide you the Visian ICL brochures as well as give you a listing of online resources where you can learn more about the Visian ICL. We want to ensure you make an informed decision about your vision, if you need more information, please let us know.

## **How soon can I return to my daily activities after receiving the Visian ICL?**

Most patients can return to their full daily routine of activities the next day.



## References

1. Sanders DR, Vukich JA. Comparison of implantable contact lens and laser assisted in situ keratomileusis for moderate to high myopia. *Cornea*, 2003;22(4):324-331.
2. Sarver EJ, Sanders DR, Vukich, JA. Image quality in myopic eyes corrected with laser in situ keratomileusis and phakic intraocular lens. *J Refract Surg*. 2003;19(4):397-404.
3. UV-Absorbing Collamer Implantable Contact Lens (ICL) for the Correction of Myopia. PMA# P030016. Presentation to the Ophthalmic Devices Advisory Panel. October 2003.